



AZIMUTH STERN DRIVE TUG 2312

“SVITZER JUPITER”

GENERAL

Yard number	513601
Delivery date	June 2020
Basic functions	Towing and mooring operations
Classification	Bureau Veritas
	1 ✳ HULL • MACH Tug (Bollard pull = 62 t)
	Unrestricted Service AUT UMS INWATER
	SURVEY COMF-NOISE 3, COMF-VIB 3
	The Netherlands
Flag	Svitzer
Owner	

DIMENSIONS

Length overall	22.80 m
Beam overall	12.03 m
Depth at sites	4.40 m
Draught aft	5.00 m
Displacement (98% consumables)	485 t

TANK CAPACITIES

Fuel oil (incl. long range tanks)	78.4 m ³
Fuel oil	54.6 m ³
Fresh water	7.8 m ³
Sewage	5.1 m ³
Dirty oil	1.5 m ³
Lubrication oil	1.5 m ³
Bilge water	3.0 m ³

PERFORMANCES

Bollard pull ahead	63.7 t
Bollard pull astern	60.2 t
Speed ahead	12.8 kn
Speed astern	12.3 kn

PROPULSION SYSTEM

Main engines	2x Caterpillar 3512C TA HD/D
Total power	3804 bkW (5102 bhp) at 1800 rpm
Azimuth thrusters	Rolls Royce US 205
Clutches (on-off type)	Rolls Royce 'built in' type
Propeller diameter	2500 mm
Forced ventilation	60.000 m ³ /h

AUXILIARY EQUIPMENT

Generator sets	2x Caterpillar C4.4 TA, 400 V, 100 kVA, 50 Hz
Bilge pump	Azcue CA-32/05 3.6 m ³ /h
General service pumps	2x Azcue CA-50/3A 20.0 m ³ /h
Fuel oil pump	Azcue CA40-1B 12.0 m ³ /h
Fuel oil filters	2x Coalester filters incl. water separator
Fuel oil purifiers	2x CJC PTU3 27/81 MZ-E2PWZ, 1920 l/h each
Fresh water pressure set	Azcue MO-19/10
Cooling system	Box cooling and keel cooling + anti-growth system
Hydraulic system	Double main engine driven pumps

DECK LAY-OUT

Anchor	2x 360 kg Pool (High Holding Power)
Anchor winch	10 m/min
Towing winch	Hydraulically driven double drum, pull up to 31 ton and speed up to 38 m/min on second layer, 175 ton brake
	Electrically driven, 5 ton at 15 m/min
Capstan	Mampaey SWL 650 kN / 65 ton
Towing hook aft	D-fender at sides, cylindrical fender at transom corners, cylindrical and W-block bow fender
Fendering	

ACCOMMODATION

For 6 persons (MLC 2006 compliant), completely insulated and finished with durable modern linings, acoustical ceiling in the wheelhouse and floating floors. Air-conditioned accommodation with four crew cabins and galley/ mess at accommodation deck. Switchboard room and sanitary facilities at lower deck.

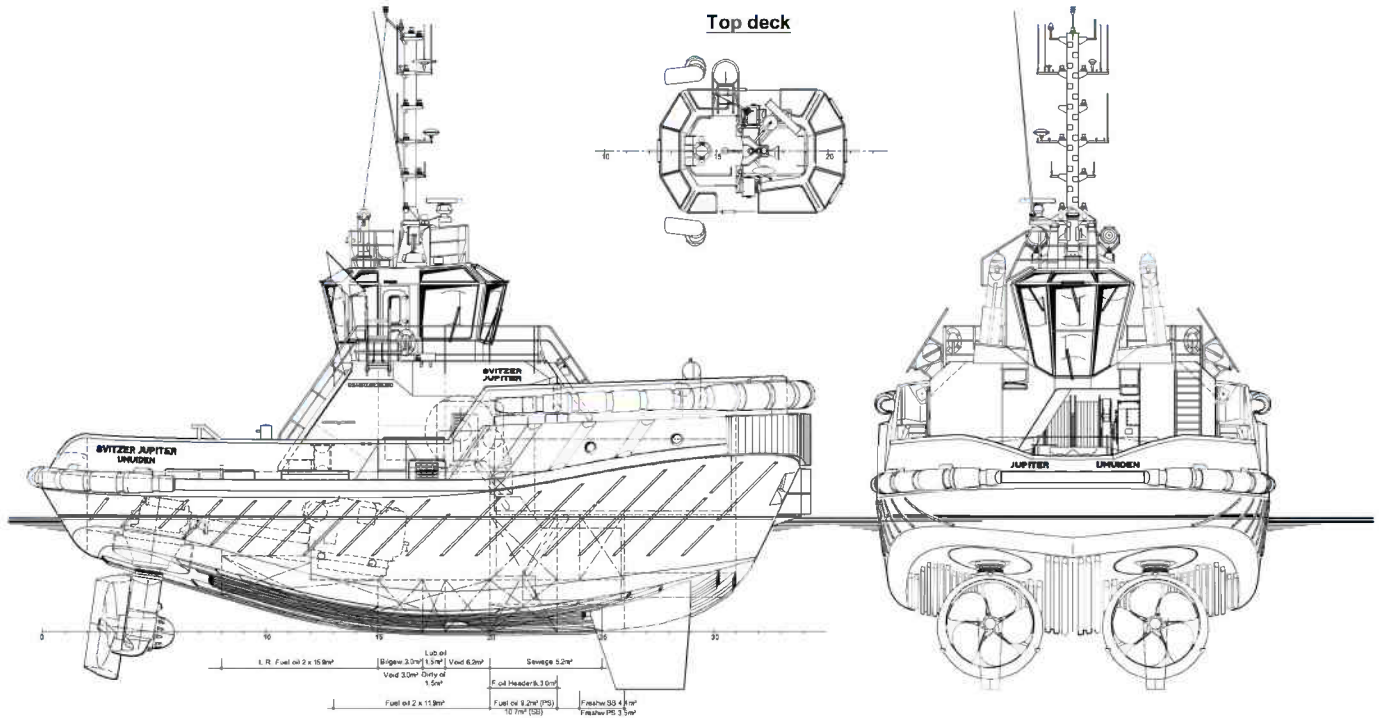
NAUTICAL AND COMMUNICATION EQUIPMENT

Searchlights	2x Norselight SH470 2000 W
Radar system	Furuno FAR 1518-BB
Electronic chart system	Navi-Sailor 4000 ECS
Magnetic compass	Cassens & Plath Reflecta 11
Satellite compass/GPS	Simrad GN70/HS80A
Autopilot	Simrad AP-70
Echosounder	Furuno FE-800
VHF radio telephone	2x Cobham Sailor 6222, one with DSC + 1x Cobham Sailor 6215
VHF hand-held	2x Jotron Tron TR-30
UHF transceiver	Motorola DM4400
Navtex	Furuno NX-700B
SSB	Furuno FS-1575
AIS	Furuno FA-170
EPIRB	Jotron Tron-60S
SART	Jotron Tronsart20
Remote monitoring	Ready for Damen Triton
Anemometer	Gill Instruments GMX 500

DAMEN

AZIMUTH STERN DRIVE TUG 2312

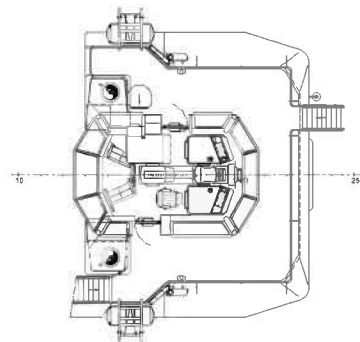
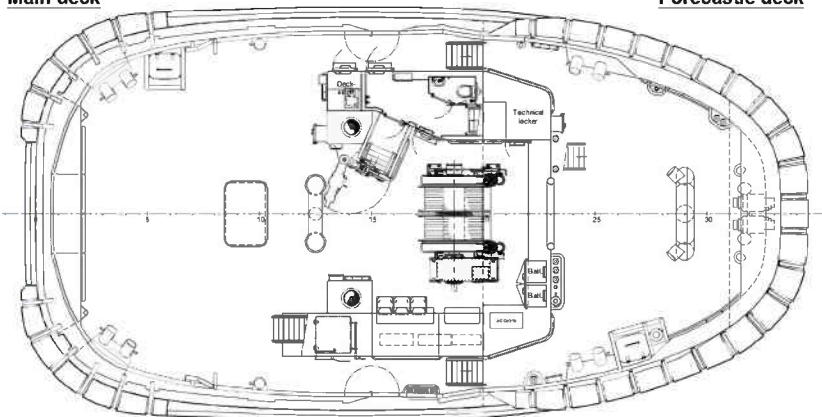
"SVITZER JUPITER"



Main deck

Forecastle deck

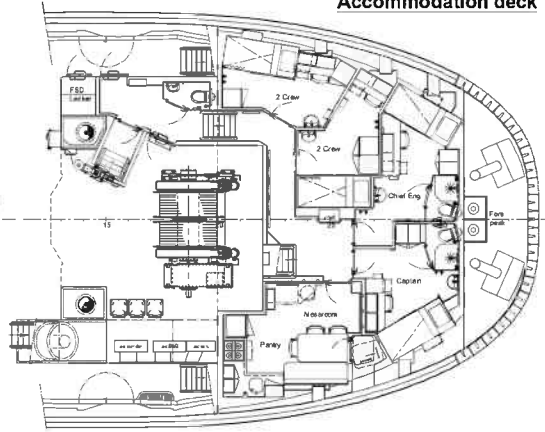
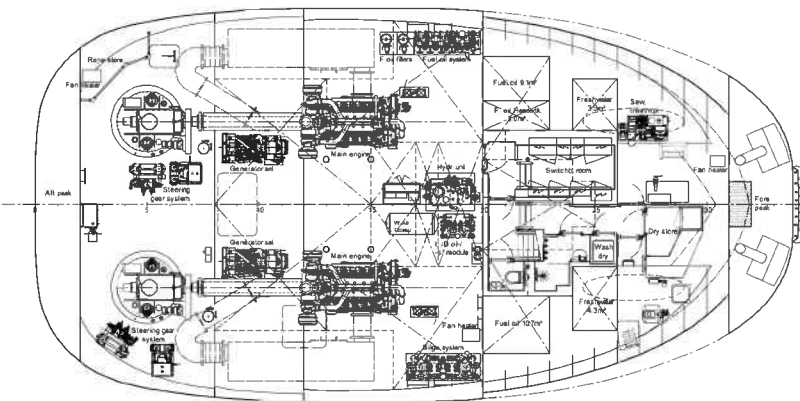
Bridge deck



Below Main deck

Lower deck

Accommodation deck



DAMEN

DAMEN SHIPYARDS GROUP

Avelingen-West 20
4202 MS Gorinchem
The Netherlands

P.O. Box 1
4200 AA Gorinchem
The Netherlands

phone +31 (0)183 63 99 22
fax +31 (0)183 63 21 89

info@damen.com
www.damen.com

© No part of the leaflet may be reproduced in any form, by print, photo print, microfilm, or any other means, without written permission from Damen Shipyards Group