



# AZIMUTH STERN DRIVE TUG 2312

"AJAX"

## GENERAL

Yard number	513604
Delivery date	June 2020
Basic functions	Towing and mooring
Classification	Bureau Veritas
	I ✱ HULL • MACH Escort Tug (Bollard pull = 62 t) (maximum steering force = 54 t, maximum braking force = 49 t, maximum escort speed = 10 kn) Unrestricted
	Navigation AUT UMS Inwater Survey COMF-NOISE 3, COMF-VIB 3
Flag	Poland
Owner	WUZ Port and Maritime Services

## DIMENSIONS

Length overall	22.80 m
Beam overall	12.03 m
Depth at sites	4.40 m
Draught aft	5.11 m
Displacement (98% consumables)	467 t

## TANK CAPACITIES

Fuel oil (incl. long range tanks)	78.4 m <sup>3</sup>
Fuel oil	54.6 m <sup>3</sup>
Fresh water	7.8 m <sup>3</sup>
Sewage	5.1 m <sup>3</sup>
Dirty oil	1.5 m <sup>3</sup>
Lubrication oil	1.5 m <sup>3</sup>
Bilge water	3.0 m <sup>3</sup>
Coolant	3.0 m <sup>3</sup>

## PERFORMANCES

Bollard pull ahead	62.3 t
Bollard pull astern	60.5 t
Speed ahead	12.9 kn
Speed astern	12.3 kn

## PROPULSION SYSTEM

Main engines	2x Caterpillar 3512C TA HD/D
Total power	3804 bkW (5102 bhp) at 1800 rpm
Azimuth thrusters	Rolls Royce US 205
Clutches (on-off type)	Rolls Royce 'built in' type
Propeller diameter	2500 mm
Forced ventilation	60.000 m <sup>3</sup> /h

## AUXILIARY EQUIPMENT

Generator sets	2x Caterpillar C4.4 TA, 400 V, 100 kVA, 50 Hz
Bilge pump	Azcue CA-32/05 3.6 m <sup>3</sup> /h
General service pumps	2x Azcue CA-50/3A 20.0 m <sup>3</sup> /h
Fuel oil pump	Azcue CA40-1B 12.0 m <sup>3</sup> /h
Fuel oil filters	2x Coalester filters incl. water separator
Fuel oil purifiers	2x CJC PTU3 27/81 MZ-E2PWZ, 1920 l/h each
Dynamic fuel oil purifier	Westfalia OTC 3-02-137
Thruster filtration system	CJC PTU 15/25 PV2 – EH2H1
Fresh water pressure set	Azcue MO-19/10
Cooling system	Box cooling and keel cooling + anti-growth system
Hydraulic system	2x main engine driven pumps

## DECK LAY-OUT

Anchor	2x 360 kg Pool (High Holding Power)
Anchor winch	10 m/min
Towing winch	Hydraulically driven double drum, pull up to 31 ton and speed up to 38 m/min on second layer, 175 ton brake
Fendering	D-fender at sides, cylindrical fender at transom corners, cylindrical and W-block bow fender

## ACCOMMODATION

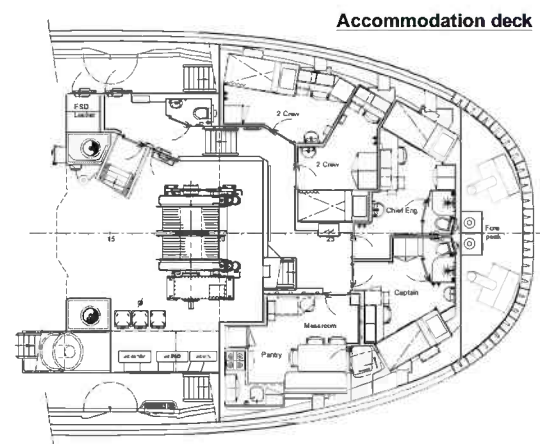
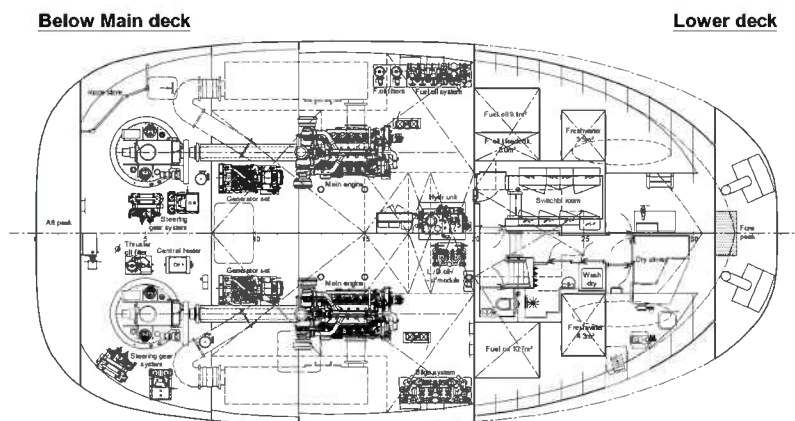
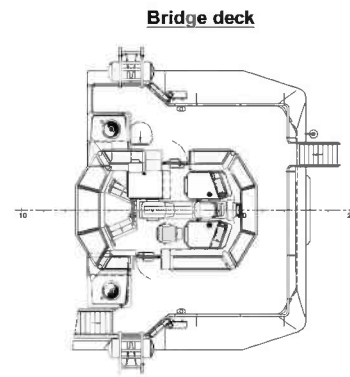
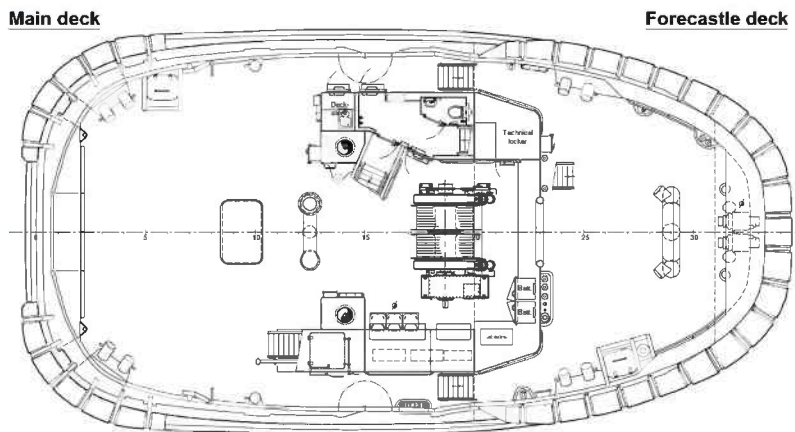
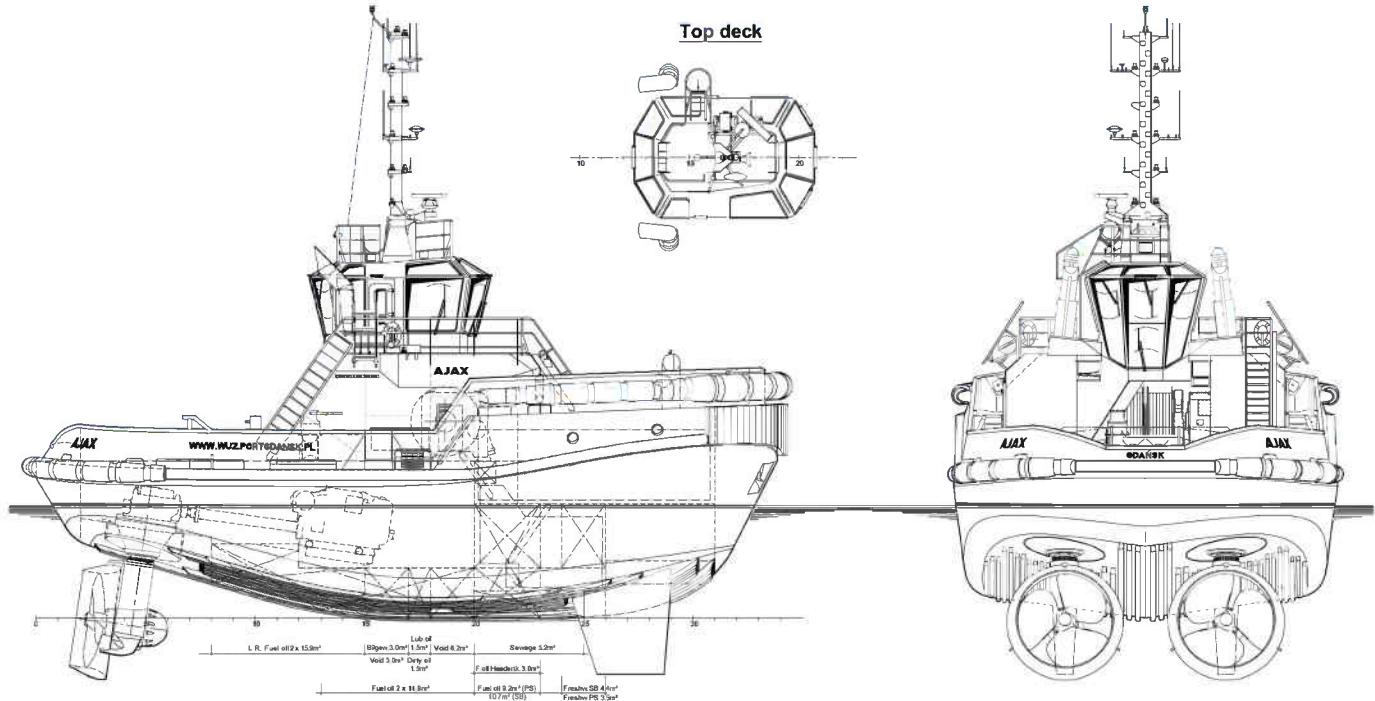
For 6 persons (MLC 2006 compliant), completely insulated and finished with durable modern linings, acoustical ceiling in the wheelhouse and floating floors. Air-conditioned accommodation with four crew cabins and galley/ mess at accommodation deck. Switchboard room and sanitary facilities at lower deck.

## NAUTICAL AND COMMUNICATION EQUIPMENT

Searchlight	Norselight SH470 2000 W
Radar system	Furuno FAR 1518-BB + second radar screen
Electronic radar system	Navi-Sailor 4000 ECS
Compass	Cassens & Plath Reflecta 11
Satellite compass/GPS	Simrad GN70/HS80A
Autopilot	Simrad AP-70
Echosounder	Furuno FE-800
VHF radio telephone	2x Cobham Sailor 6222, one with DSC
VHF hand-held	2x Jotron Tron TR-30
UHF	Sailor 3965 UHF
Navtex	Furuno NX-700B
AIS	Furuno FA-170
EPIRB	Jotron Tron-60S
SART	Jotron Tronsart20
Remote monitoring	Ready for Damen Triton
Anemometer	Gill Instruments GMX 500

# AZIMUTH STERN DRIVE TUG 2312

"AJAX"



**DAMEN**

DAMEN SHIPYARDS GROUP

Avelingen-West 20  
4202 MS Gorinchem  
The Netherlands

P.O. Box 1  
4200 AA Gorinchem  
The Netherlands

phone +31 (0)183 63 99 22  
fax +31 (0)183 63 21 89

info@damen.com  
[www.damen.com](http://www.damen.com)

© No part of the leaflet may be reproduced in any form, by print, photo print, microfilm, or any other means, without written permission from Damen Shipyards Group