



AZIMUTH STERN DRIVE TUG 2411

"JAN"

GENERAL

Yard number	512286
Delivery date	July 2019
Basic functions	Towing, mooring and fire-fighting operations
Classification	Lloyd's Register * 100 A1 Tug [*] LMC UMS IWS Fire Fighting Ship 1
Flag	Germany
Owner	Neue Sleppdampfschiffsreederei Louis Meyer GmbH & Co. KG

DIMENSIONS

Length overall	24.47 m
Beam overall	11.33 m
Depth at sides	4.60 m
Draught aft	5.53 m
Displacement	463 t

TANK CAPACITIES

Fuel oil	68.2 m ³
Fresh water	8.8 m ³
Sewage	3.1 m ³
Foam	6.3 m ³
Dispersant	3.1 m ³
Dirty oil	2.9 m ³
Lubrication oil	4.8 m ³
Bilge water	1.9 m ³

PERFORMANCES

Bollard pull ahead	71.4 t
Bollard pull astern	70.3 t
Speed ahead	13.2 kn
Speed astern	13.0 kn

PROPULSION SYSTEM

Main engines	2x Caterpillar 3516C TA HD+/D
Total power	4200 kW (5632 bhp) at 1600 rpm
Azimuth thrusters	Rolls Royce US 255
Propeller	2600 mm fixed pitch
Forced ventilation	30.000 m ³ /h

AUXILIARY EQUIPMENT

Main generator sets	2x Caterpillar C4.4 TA, 86 kVA, 230/400 V, 50 Hz
General service pump	2x Sterling AKHA 5101, 20 m ³ /h at 14 m.w.g.
Fuel oil header pumps	2x Sterling R 35/40, 3.4 m ³ /h at 4 bar
Fuel oil purifier	2x GEA Westfalia OTC-2-02-137
Sewage treatment plant	Tecnicomar ECOMar 20
Fifi system	Diesel driven pumps of 2400 m ³ /h fire-fighting 1 and two electrically controlled monitors of 1200 m ³ /h each

DECK LAY-OUT

Anchor	2x 360 kg Pool (High Holding Power)
Anchor/towing winch	Hydraulically driven two speed drum and warping head, 33 ton up to 11 m/min, reduced pull up to 51 m/min, 150 ton brake
Fendering	Cylindrical + block bow fender with waterspray, D-fender side/aft, cylindrical fender at transom corners

ACCOMMODATION

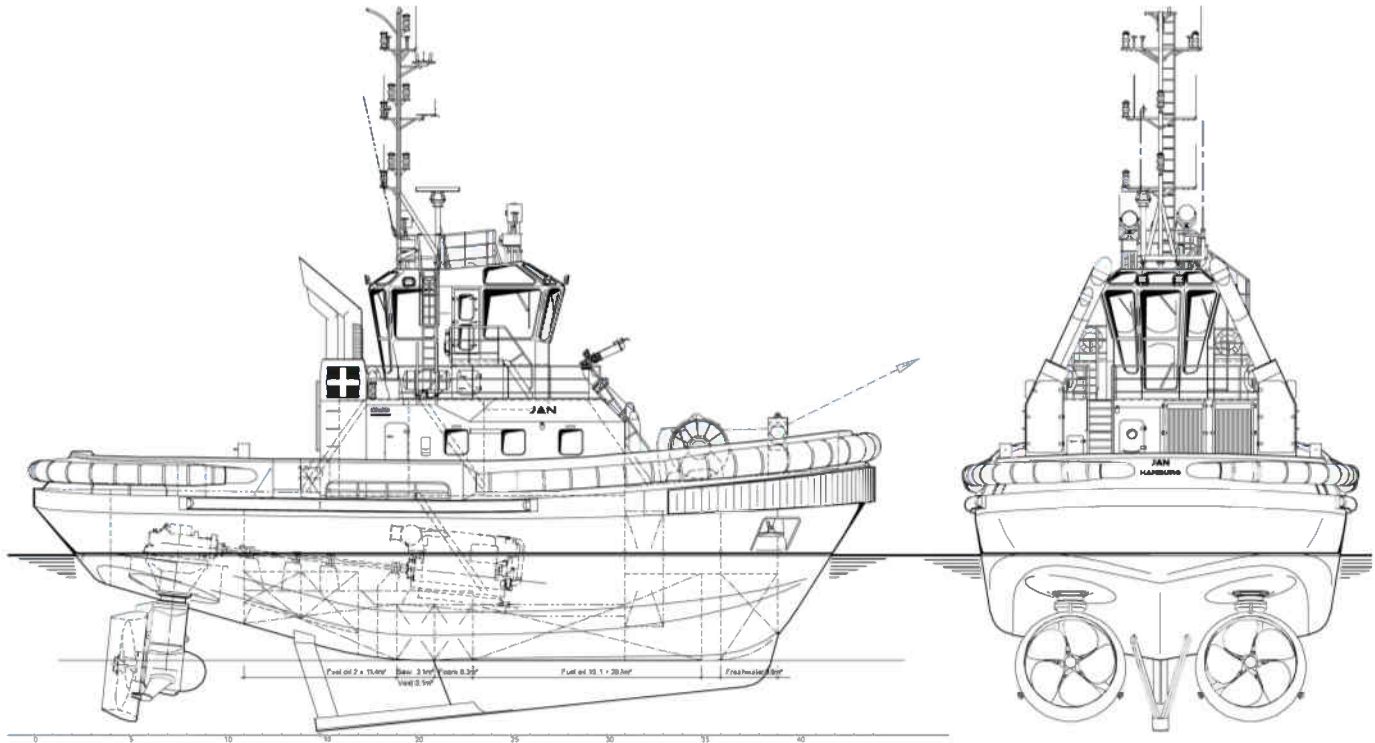
Air-conditioned and heated accommodation spaces for up to 4 persons, consisting of one captain's cabin, one chief engineer's cabin and one double crew cabin, galley, mess room and sanitary spaces.

NAUTICAL AND COMMUNICATION EQUIPMENT

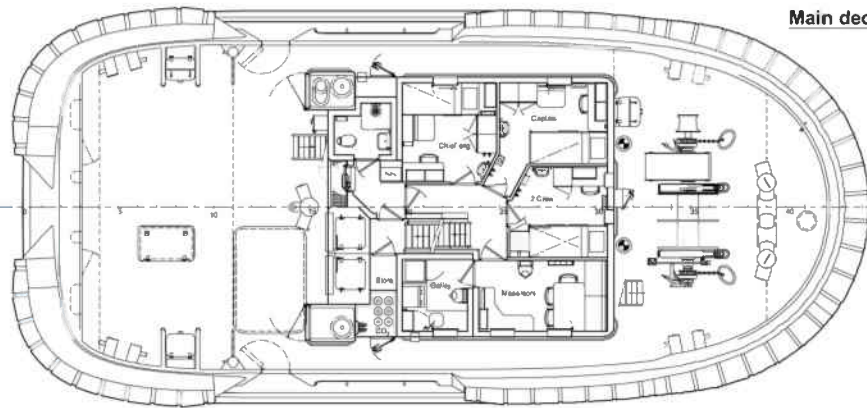
Searchlight (FIFI 1)	2x Pesch 450 W Xenon
Radar system	Furuno FAR-2117
Autopilot	Robertson AP-70
GPS	Furuno GP-170
Echosounder	Furuno FE-800
VHF	2x Sailor Compact 6222
VHF hand-held	2x Jotron TRON TR-20
Magnetic compass	Cassens & Plath, type Kotter
Satellite compass	Furuno SC-70
Navtex	Furuno NX-700
AIS	Furuno FA-150
EPIRB	Jotron Tron-60S
Sart	Jotron Tronsart20

AZIMUTH STERN DRIVE TUG 2411

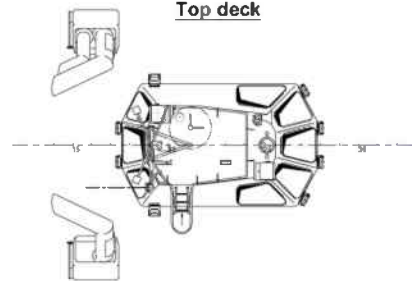
"JAN"



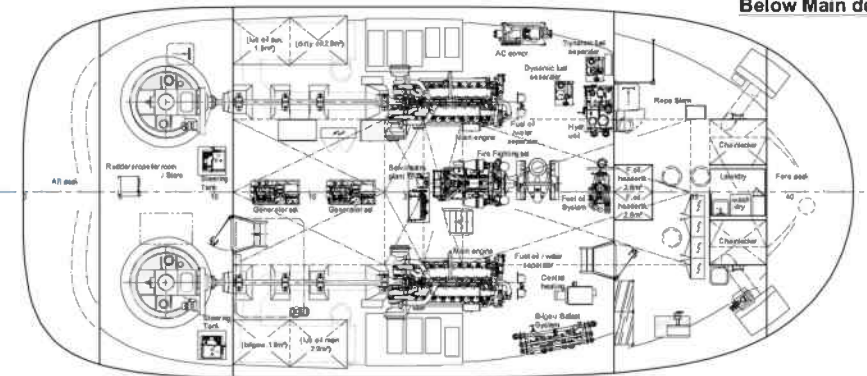
Main deck



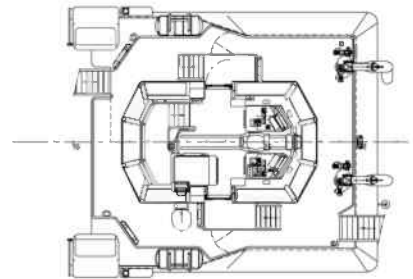
Top deck



Below Main deck



Bridge deck



DAMEN

DAMEN SHIPYARDS GROUP

Avelingen-West 20
4202 MS Gorinchem
The Netherlands

P.O. Box 1
4200 AA Gorinchem
The Netherlands

phone +31 (0)183 63 99 22
fax +31 (0)183 63 21 89

info@damen.com
www.damen.com

© No part of the leaflet may be reproduced in any form, by print, photo print, microfilm, or any other means, without written permission from Damen Shipyards Group